



Road Deaths Australia - November 2025

This month's key figures

- There was a total of 101 road deaths during the month of November 2025. The current figure is 6.7% lower than the average for November over the previous 5 years (2020-2024).
- During the 12 months ending November 2025, there were 1,332 road deaths. This is a 3.0% increase compared to the 12-month period ending November 2024.
- Presently, the rate of annual deaths per 100,000 population stands at 4.8. This is a 1.3% increase compared to the rate for the 12-month period ending November 2024.

Figure 1 Monthly and annual road deaths over last five years, national

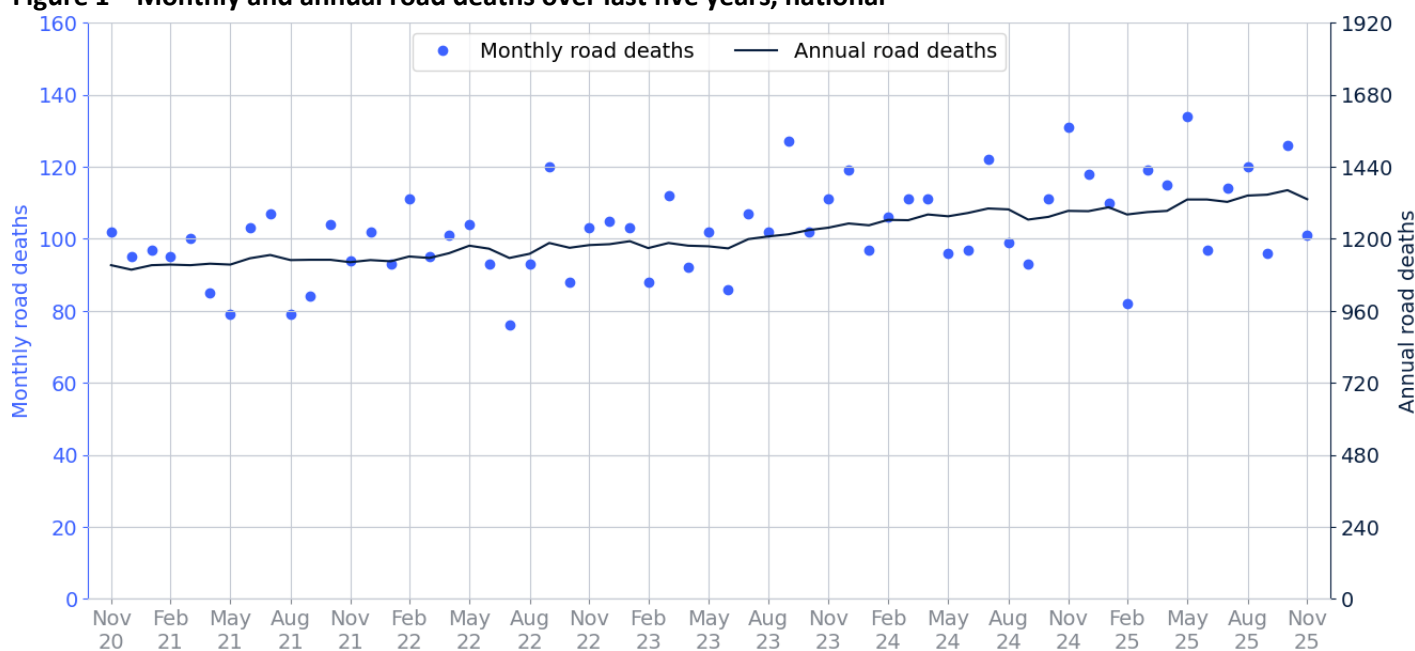


Table 1 Monthly fatalities over the last 5 years

Year	Jan	Feb	Mar	Apr	May	Jun	Jul	Aug	Sep	Oct	Nov	Dec	Total
2020	82	93	102	80	82	82	96	96	83	104	102	95	1,097
2021	97	95	100	85	79	103	107	79	84	104	94	102	1,129
2022	93	111	95	101	104	93	76	93	120	88	103	105	1,182
2023	103	88	112	92	102	86	107	102	127	102	111	119	1,251
2024	97	106	111	111	96	97	122	99	93	111	131	118	1,292
2025	110	82	119	115	134	97	114	120	96	126	101	—	1,214

1. Monthly and annual deaths by jurisdiction – 2 years

Figure 2 Monthly and annual road deaths over last two years, by jurisdiction



2. Deaths by jurisdiction

Table 2.1 Current month

Current month	NSW	VIC	QLD	SA	WA	TAS	NT	ACT	Total
November 2024	39	35	31	8	11	1	4	2	131
November 2025	36	16	33	4	7	4	0	1	101
Latest per cent change	-7.7%	-54.3%	6.5%	-50.0%	-36.4%	300.0%	-100.0%	-50.0%	-22.9%

Table 2.2 Calendar year to date

Year to date	NSW	VIC	QLD	SA	WA	TAS	NT	ACT	Total
Jan to Nov 2024	294	265	277	79	165	26	58	10	1,174
Jan to Nov 2025	328	262	287	80	172	42	36	7	1,214
Latest per cent change	11.6%	-1.1%	3.6%	1.3%	4.2%	61.5%	-37.9%	-30.0%	3.4%

Table 2.3 12 months ending November

12 months ending November	NSW	VIC	QLD	SA	WA	TAS	NT	ACT	Total
2021	265	223	293	100	163	33	35	10	1,122
2022	286	249	282	70	165	53	54	20	1,179
2023	335	285	277	112	166	28	31	3	1,237
2024	326	290	301	92	181	31	61	11	1,293
2025	361	281	312	90	195	47	38	8	1,332
Latest per cent change	10.7%	-3.1%	3.7%	-2.2%	7.7%	51.6%	-37.7%	-27.3%	3.0%

3. Annual deaths per 100,000 population

Table 3.1 12 months ending November

12 months ending November	NSW	VIC	QLD	SA	WA	TAS	NT	ACT	Total
2021	3.3	3.4	5.6	5.6	5.9	5.8	14.1	2.2	4.4
2022	3.5	3.8	5.3	3.8	5.9	9.3	21.4	4.3	4.5
2023	4.0	4.2	5.1	6.0	5.8	4.9	12.1	0.6	4.6
2024	3.8	4.2	5.4	4.9	6.1	5.4	23.4	2.3	4.8
2025	4.2	4.0	5.5	4.7	6.4	8.2	14.4	1.6	4.8
Latest per cent change	9.2%	-5.0%	1.8%	-3.3%	5.2%	51.2%	-38.6%	-28.4%	1.3%

Table 3.2 Calendar year period

Calendar year	NSW	VIC	QLD	SA	WA	TAS	NT	ACT	Total
2020	3.5	3.2	5.4	5.2	5.7	6.8	12.5	1.6	4.3
2021	3.4	3.5	5.3	5.5	6.0	6.2	14.1	2.4	4.4
2022	3.4	3.6	5.6	3.9	6.3	8.7	20.5	3.9	4.5
2023	4.1	4.3	5.0	6.3	5.5	5.6	12.0	0.8	4.7
2024	3.9	4.1	5.4	4.7	6.3	5.4	23.0	2.3	4.8
Latest per cent change	-5.4%	-5.9%	7.8%	-24.9%	15.5%	-3.3%	91.1%	170.8%	1.3%

4. Deaths by road user, age group, gender and remoteness area

Table 4.1 By road user

12 months ending November	Driver	Passenger	Pedestrian	Motorcyclist	Pedal cyclist	Total
2021	539	184	132	222	38	1,122
2022	536	181	161	252	39	1,179
2023	583	209	162	243	34	1,237
2024	580	202	168	285	37	1,293
2025	585	202	207	270	43	1,332
Latest per cent change	0.9%	0.0%	23.2%	-5.3%	16.2%	3.0%

Motorcyclist and Pedal cyclist categories include pillion passengers

Totals may include unknown values

Table 4.2 By age group (years)

12 months ending November	0 to 7	8 to 16	17 to 25	26 to 39	40 to 64	65 to 74	≥ 75	Total
2021	21	41	217	246	343	109	143	1,122
2022	16	52	223	255	371	124	134	1,179
2023	13	48	240	284	363	131	157	1,237
2024	20	46	241	278	409	133	164	1,293
2025	26	37	213	291	414	144	199	1,332
Latest per cent change	30.0%	-19.6%	-11.6%	4.7%	1.2%	8.3%	21.3%	3.0%

Totals may include unknown values

Table 4.3 By gender

12 months ending November	Male	Female	Total
2021	841	280	1,122
2022	886	292	1,179
2023	925	312	1,237
2024	981	310	1,293
2025	1,000	331	1,332
Latest per cent change	1.9%	6.8%	3.0%

Totals may include unknown values

Table 4.4 By remoteness

12 months ending November	Major cities	Inner regional	Outer regional	Remote	Very remote	Unknown	Total
2021	379	352	261	55	60	15	1,122
2022	405	376	259	65	63	11	1,179
2023	433	440	258	53	49	4	1,237
2024	462	414	287	67	56	7	1,293
2025	400	373	256	40	22	241	1,332
Latest per cent change	-13.4%	-9.9%	-10.8%	-40.3%	-60.7%	3342.9%	3.0%

Totals may include unknown values

5. Fatal crashes: counts and characteristics

Table 5.1 By number of vehicles involved in a crash

12 months ending November	Single	Multiple	Total
2021	606	433	1,039
2022	668	440	1,110
2023	616	508	1,127
2024	634	549	1,184
2025	677	565	1,245
Latest per cent change	6.8%	2.9%	5.2%

Totals may include unknown values

Table 5.2 By posted speed limit (km/h)

12 months ending November	≤ 40	50	60 to 75	80 to 90	100	≥ 110	Total
2021	18	127	249	152	337	142	1,039
2022	19	120	292	191	344	139	1,110
2023	38	147	286	187	325	138	1,127
2024	31	130	302	217	358	134	1,184
2025	30	155	316	194	332	139	1,245
Latest per cent change	-3.2%	19.2%	4.6%	-10.6%	-7.3%	3.7%	5.2%

Totals may include unknown values

Table 5.3 By day of week

12 months ending November	Weekday	Weekend	Total
2021	633	406	1,039
2022	672	438	1,110
2023	710	417	1,127
2024	753	431	1,184
2025	766	479	1,245
Latest per cent change	1.7%	11.1%	5.2%

'Weekday' refers to 6am Monday through to 5:59pm Friday

Totals may include unknown values

Table 5.4 By time of day

12 months ending November	Day	Night	Total
2021	643	396	1,039
2022	641	469	1,110
2023	693	434	1,127
2024	740	444	1,184
2025	761	484	1,245
Latest per cent change	2.8%	9.0%	5.2%

'Day' refers to 6am through to 5:59pm

Totals may include unknown values

Appendix

Road deaths from recent months are preliminary and subject to revision.

Road death

The road safety agencies in each jurisdiction use detailed criteria to define road crashes and road deaths. Briefly, a death is classified as resulting from a road crash if the crash occurred on a public road, is unintentional and the death occurred within 30 days from injuries sustained in the crash.

Fatality rates

Fatality rates per population are based on road deaths over the last 12-months, and the population at the midpoint of that period. Population estimates are sourced from ABS' National, state and territory population statistics. The midpoint population is interpolated if necessary.

Other sources for tables in this bulletin

The underlying database used to produce this bulletin — the Australian Road Deaths Database — is available for data extraction at <https://catalogue.data.infrastructure.gov.au/dataset/australian-road-deaths-database>

Data sources

Data are obtained from:

- Transport for NSW
- Department of Transport, Victoria
- Department of Transport and Main Roads, Queensland
- Department for Infrastructure and Transport, SA
- Western Australia Police
- Department of State Growth, Tasmania
- Department of Infrastructure, Planning and Logistics, NT
- Transport Canberra and City Services Directorate, ACT
- Australian Bureau of Statistics (National, state and territory population)

Contact us

For further information about data in this bulletin, contact:

- National Road Safety Data Hub: <https://datahub.roadsafety.gov.au>
- Email: roadsafetystatistics@infrastructure.gov.au

Bureaux Reference: 2025-144

ISSN: 1449-1168

© Copyright. Creative Commons 3.0

Disclaimers | Department of Infrastructure, Transport, Regional Development, Communications, Sport and the Arts at <https://www.infrastructure.gov.au/disclaimers>