



Road Deaths Australia - May 2025

This month's key figures

- There was a total of 127 road deaths during the month of May 2025. The current figure is 36.9% higher than the average for May over the previous 5 years (2020-2024).
- During the 12 months end May 2025, there were 1,337 road deaths. This is a 4.8% increase compared to the 12-month period ending May 2024.
- Presently, the rate of annual deaths per 100,000 population stands at 4.9. This is a 3.0% increase compared to the rate for the 12-month period ending May 2024.

Figure 1 Monthly and annual road deaths over last five years, national

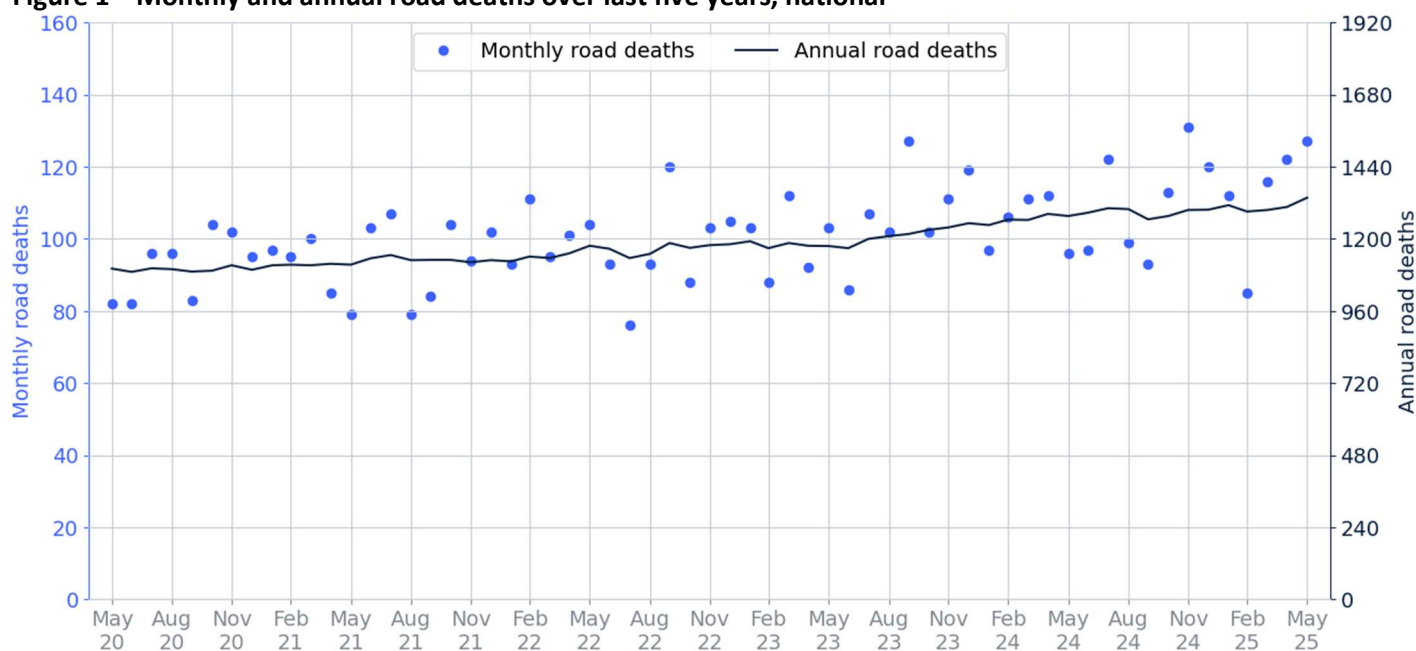


Table 1 Monthly fatalities over the last 5 years

Year	Jan	Feb	Mar	Apr	May	Jun	Jul	Aug	Sep	Oct	Nov	Dec	Total
2020	82	93	102	80	82	82	96	96	83	104	102	95	1,097
2021	97	95	100	85	79	103	107	79	84	104	94	102	1,129
2022	93	111	95	101	104	93	76	93	120	88	103	105	1,182
2023	103	88	112	92	103	86	107	102	127	102	111	119	1,252
2024	97	106	111	112	96	97	122	99	93	113	131	120	1,297
2025	112	85	116	122	127	—	—	—	—	—	—	—	562

1. Monthly and annual deaths by jurisdiction – 2 years

Figure 2 Monthly and annual road deaths over last two years, by jurisdiction



2. Deaths by jurisdiction

Table 2.1 Current month

Current month	NSW	VIC	QLD	SA	WA	TAS	NT	ACT	Total
May 2024	25	26	18	6	14	1	5	1	96
May 2025	29	37	28	9	16	1	7	0	127
Latest per cent change	16.0%	42.3%	55.6%	50.0%	14.3%	0.0%	40.0%	-100.0%	32.3%

Table 2.2 Calendar year to date

Year to date	NSW	VIC	QLD	SA	WA	TAS	NT	ACT	Total
Jan to May 2024	136	118	115	36	78	9	25	5	522
Jan to May 2025	154	133	116	35	84	21	16	3	562
Latest per cent change	13.2%	12.7%	0.9%	-2.8%	7.7%	133.3%	-36.0%	-40.0%	7.7%

Table 2.3 12 months end May

12 months end May	NSW	VIC	QLD	SA	WA	TAS	NT	ACT	Total
2021	280	199	297	93	169	32	34	10	1,114
2022	289	241	297	88	152	49	46	15	1,177
2023	278	273	269	95	180	36	34	11	1,176
2024	349	283	286	96	173	30	52	7	1,276
2025	350	299	303	88	194	43	51	9	1,337
Latest per cent change	0.3%	5.7%	5.9%	-8.3%	12.1%	43.3%	-1.9%	28.6%	4.8%

3. Annual deaths per 100,000 population

Table 3.1 12 months end May

12 months end May	NSW	VIC	QLD	SA	WA	TAS	NT	ACT	Total
2021	3.5	3.0	5.7	5.2	6.2	5.7	13.7	2.2	4.3
2022	3.6	3.7	5.7	4.9	5.5	8.6	18.5	3.3	4.6
2023	3.4	4.1	5.0	5.2	6.4	6.3	13.5	2.4	4.5
2024	4.1	4.1	5.2	5.1	5.9	5.2	20.5	1.5	4.7
2025	4.1	4.2	5.4	4.7	6.5	7.5	19.9	1.9	4.9
Latest per cent change	-1.1%	3.5%	3.9%	-9.4%	9.5%	42.9%	-2.7%	26.6%	3.0%

Table 3.2 Calendar year period

Calendar year	NSW	VIC	QLD	SA	WA	TAS	NT	ACT	Total
2020	3.5	3.2	5.4	5.2	5.7	6.8	12.5	1.6	4.3
2021	3.4	3.5	5.3	5.5	6.0	6.2	14.1	2.4	4.4
2022	3.4	3.6	5.5	3.9	6.3	8.8	20.8	3.9	4.5
2023	4.1	4.3	5.0	6.3	5.5	5.8	12.2	0.9	4.7
2024	3.9	4.1	5.4	4.7	6.3	5.4	23.5	2.3	4.8
Latest per cent change	-3.9%	-6.0%	7.8%	-24.9%	15.7%	-6.3%	92.0%	170.5%	1.5%

4. Deaths by road user, age group, gender and remoteness area

Table 4.1 By road user

12 months end May	Driver	Passenger	Pedestrian	Motorcyclist	Pedal cyclist	Total
2021	552	177	121	225	35	1,114
2022	562	189	147	229	39	1,177
2023	540	199	158	236	39	1,176
2024	578	207	166	277	30	1,276
2025	608	207	192	268	41	1,337
Latest per cent change	5.2%	0.0%	15.7%	-3.2%	36.7%	4.8%

Motorcyclist and Pedal cyclist categories include pillion passengers

Totals may include unknown values

Table 4.2 By age group (years)

12 months end May	0 to 7	8 to 16	17 to 25	26 to 39	40 to 64	65 to 74	≥ 75	Total
2021	22	45	218	279	335	93	121	1,114
2022	18	45	226	248	362	122	152	1,177
2023	15	49	227	258	365	114	147	1,176
2024	17	47	237	284	385	143	161	1,276
2025	23	38	219	290	430	147	184	1,337
Latest per cent change	35.3%	-19.1%	-7.6%	2.1%	11.7%	2.8%	14.3%	4.8%

Totals may include unknown values

Table 4.3 By gender

12 months end May	Male	Female	Total
2021	824	290	1,114
2022	889	287	1,177
2023	851	324	1,176
2024	979	296	1,276
2025	1,004	329	1,337
Latest per cent change	2.6%	11.1%	4.8%

Totals may include unknown values

Table 4.4 By remoteness

12 months end May	Major cities	Inner regional	Outer regional	Remote	Very remote	Unknown	Total
2021	362	367	248	57	65	15	1,114
2022	398	382	264	68	54	11	1,177
2023	444	379	247	42	54	10	1,176
2024	402	419	262	63	47	83	1,276
2025	362	369	257	39	26	284	1,337
Latest per cent change	-10.0%	-11.9%	-1.9%	-38.1%	-44.7%	242.2%	4.8%

Totals may include unknown values

5. Fatal crashes: counts and characteristics

Table 5.1 By number of vehicles involved in a crash

12 months end May	Single	Multiple	Total
2021	584	450	1,034
2022	661	430	1,091
2023	620	464	1,086
2024	645	520	1,169
2025	676	553	1,235
Latest per cent change	4.8%	6.3%	5.6%

Totals may include unknown values

Table 5.2 By posted speed limit (km/h)

12 months end May	≤ 40	50	60 to 75	80 to 90	100	≥ 110	Total
2021	14	113	237	182	345	132	1,034
2022	21	130	271	169	354	136	1,091
2023	30	117	295	178	317	144	1,086
2024	32	149	290	201	347	140	1,169
2025	28	128	305	208	340	132	1,235
Latest per cent change	-12.5%	-14.1%	5.2%	3.5%	-2.0%	-5.7%	5.6%

Totals may include unknown values

Table 5.3 By day of week

12 months end May	Weekday	Weekend	Total
2021	590	444	1,034
2022	698	393	1,091
2023	722	364	1,086
2024	803	366	1,169
2025	840	395	1,235
Latest per cent change	4.6%	7.9%	5.6%

'Weekday' refers to 6am Monday through to 5:59pm Friday

Totals may include unknown values

Table 5.4 By time of day

12 months end May	Day	Night	Total
2021	629	405	1,034
2022	654	437	1,091
2023	653	433	1,086
2024	695	474	1,169
2025	716	519	1,235
Latest per cent change	3.0%	9.5%	5.6%

'Day' refers to 6am through to 5:59pm

Totals may include unknown values

Appendix

Road deaths from recent months are preliminary and subject to revision.

Road death

The road safety agencies in each jurisdiction use detailed criteria to define road crashes and road deaths. Briefly, a death is classified as resulting from a road crash if the crash occurred on a public road, is unintentional and the death occurred within 30 days from injuries sustained in the crash.

Fatality rates

Fatality rates per population are based on road deaths over the last 12-months, and the population at the midpoint of that period. Population estimates are sourced from ABS' National, state and territory population statistics. The midpoint population is interpolated if necessary.

Other sources for tables in this bulletin

The underlying database used to produce this bulletin — the Australian Road Deaths Database is available for data extraction at <https://catalogue.data.infrastructure.gov.au/dataset/australian-road-deaths-database>

Data sources

Data are obtained from:

- Transport for NSW
- Department of Transport, Victoria
- Department of Transport and Main Roads, Queensland
- Department for Infrastructure and Transport, SA
- Western Australia Police
- Department of State Growth, Tasmania
- Department of Infrastructure, Planning and Logistics, NT
- Transport Canberra and City Services Directorate, ACT
- Australian Bureau of Statistics (National, state and territory population)

Contact us

For further information about data in this bulletin, contact:

- National Road Safety Data Hub: <https://datahub.roadsafety.gov.au>
- Email: roadsafetystatistics@infrastructure.gov.au

Bureaux Reference: 2025-064

ISSN: 1449-1168

© Copyright. Creative Commons 3.0

Disclaimers | Department of Infrastructure, Transport, Regional Development, Communications, Sport and the Arts at <https://www.infrastructure.gov.au/disclaimers>